



# SERIES 60

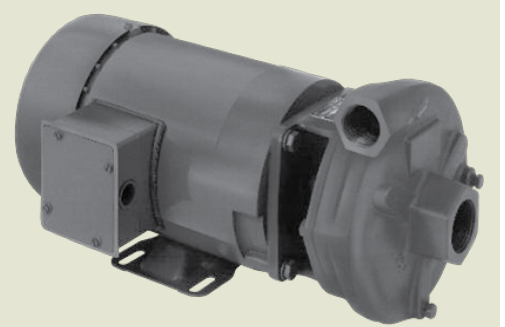
## 1-1/4" x 1" End Suction Centrifugal Pump

SERIES 60 end suction centrifugal pumps are close-coupled to standard NEMA "C" face motors. Series 60 models are available in cast iron construction to suit a wide variety of liquids. Bronze impellers are available.

All fasteners are stainless steel to reduce corrosion. Impellers are dynamically balanced to improve efficiency and bearing life.

Standard carbon / ceramic / Viton mechanical seal is self-adjusting and corrosion resistant to handle almost any liquid.

Completely tested "Wet End" PumPAKs are available without motors. The MP PumPAK® can be mounted to standard NEMA C frame motors in just minutes.



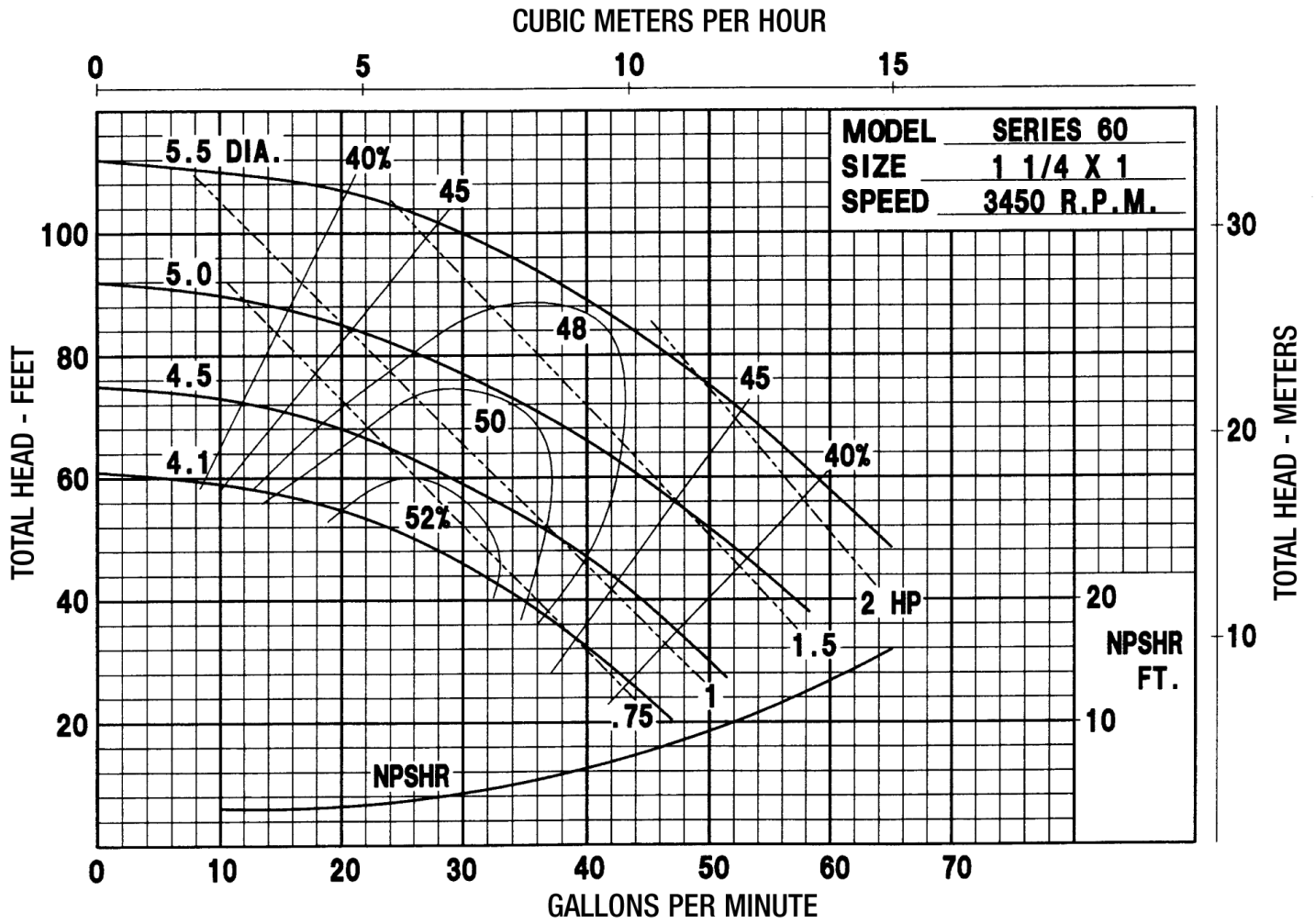
### Application

- Agricultural
- Commercial
- Industrial
- OEM

## SPECIFICATIONS:

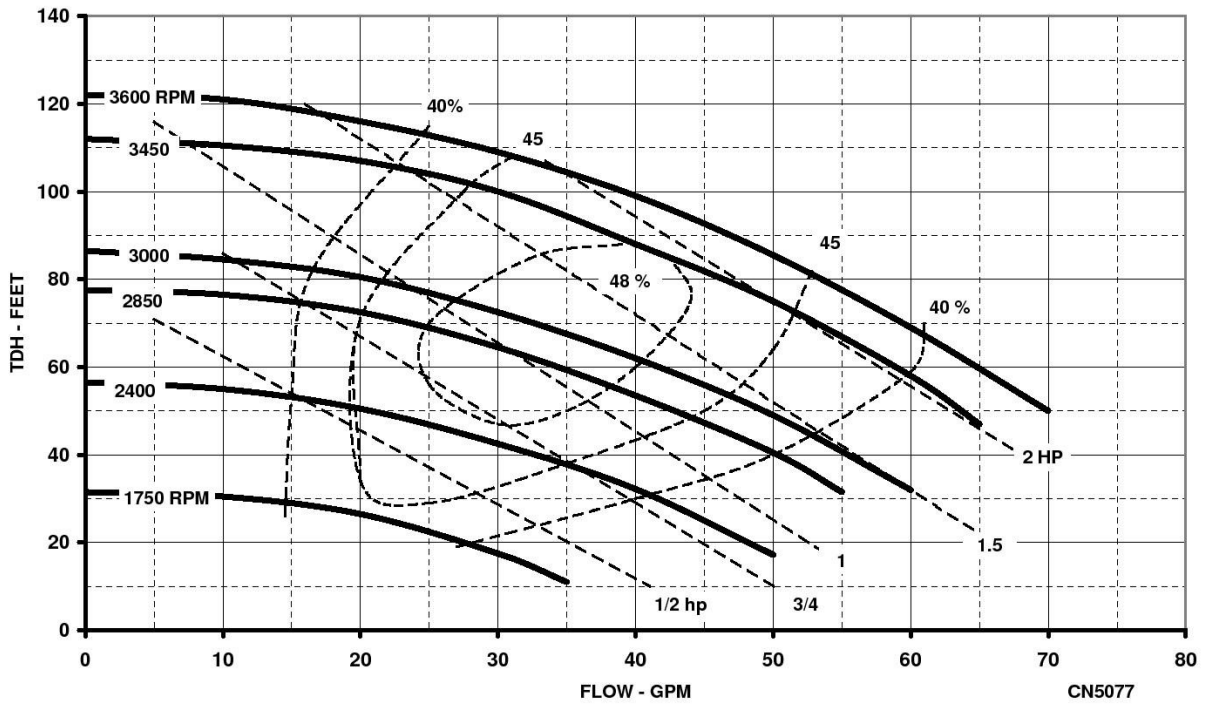
|                           |   |
|---------------------------|---|
| Suction And Discharge     | 1-1/4" x 1" NPT   |
| Materials Of Construction | Cast iron   |
| Flow                      | Up to 65 GPM  |
| Head Feet                 | Up to 112'  |
| Impeller                  | 5.5" enclosed, cast iron or bronze  |
| Motor                     | Up to 3 HP  |
| Drive Options             | Close coupled 56C, Hydraulic motor .37 cu. in., Hydraulic motor .45 cu. in., Hydraulic motor .58 cu. in., PumPAK® (without motor) |
| Seal                      | Special seal material combinations available (consult factory), Standard carbon / ceramic / Viton                                 |
| Max Solid Size            | .11"  |

# SERIES 60

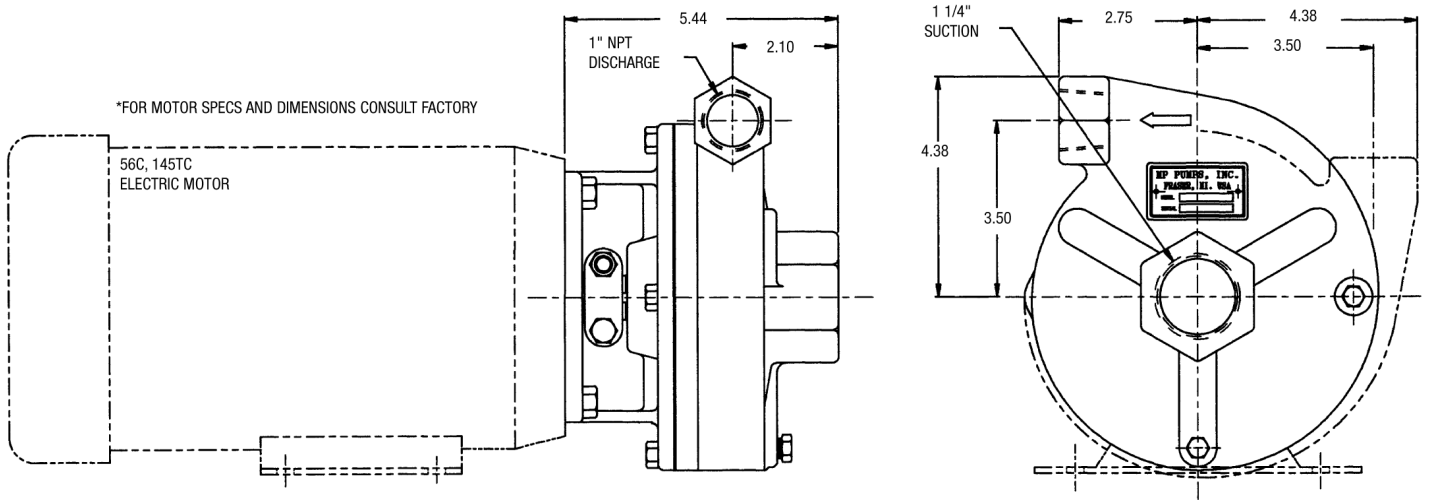


34800 BENNETT - FRASER, MI 48026-1686  
 (586) 293-8240 - FAX (586) 293-8469  
 (800) 563-8006 - www.mppumps.com

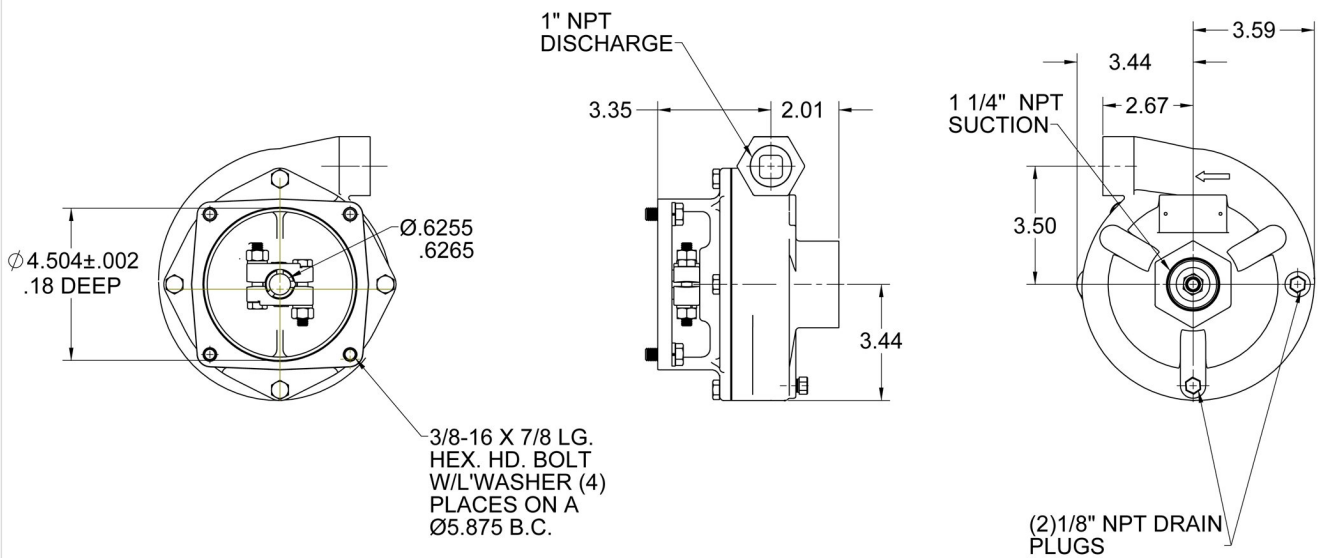
## SERIES 60 5.50 Impeller



# SERIES 60



DRAWING NO  
27667



|     |             |       |      |    |  |   |  |                |          |              |
|-----|-------------|-------|------|----|--|---|--|----------------|----------|--------------|
| G   |             |       |      |    |  | UNLESS OTHERWISE NOTED<br>THRU ANGLE PROJECTION | <b>MP PUMPS, INC.</b><br>TECUMSEH PRODUCTS CO.<br>FRASER, MICHIGAN 48026, U.S.A. |                |          |              |
| F   |             |       |      |    |  |   | MATERIAL   | FEDERALLY ISSK | MADE FOR | MADE FROM    |
| E   |             |       |      |    |  | <b>DO NOT SCALE</b>                             | DRAWN BY   | DATE COMP.     | APPROV.  | SCALE        |
| D   |             |       |      |    |  |   | C.W.   | 4-26-10        | D.D.     | FULL         |
| C   |             |       |      |    |  |   | NAME   |                |          | DRAWING NO   |
| B   |             |       |      |    |  |   | S-60 PUMPAK INSTALLATION   |                |          | <b>27667</b> |
| A   |             |       |      |    |  |   |  |                |          |              |
| REV | DESCRIPTION | DRAWN | DATE | EN |  |   |  |                |          |              |



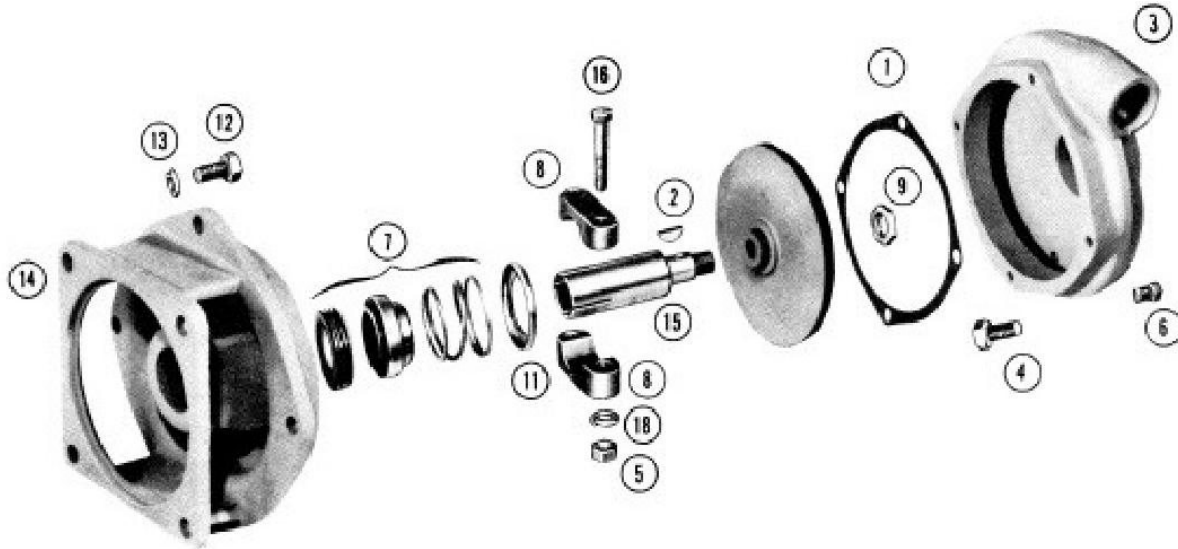
34800 BENNETT - FRASER, MI 48026-1686  
(586) 293-8240 - FAX (586) 293-8469  
(800) 563-8006 - www.mppumps.com

SERIES 60

**CLOSE COUPLED  
FOR ELECTRIC MOTOR DRIVE**

*with Mechanical Seal  
1 1/4" x 1" Pipe Size*

**SERIES 60  
STRAIGHT CENTRIFUGAL  
PUMPAKS**



**PHOTO IS TYPICAL VIEW ONLY**

**IMPORTANT:** When ordering parts, specify model and serial number shown on nameplate.

| ITEM NO. | PART NO. | DESCRIPTION | QUANTITY REQUIRED PER MODEL |            |
|----------|----------|-------------|-----------------------------|------------|
|          |          |             | ROTATION                    | Right Hand |
|          |          |             | PIPE SIZE                   | 1 1/2"x1"  |
|          |          |             | METAL                       | Cast Iron  |
|          |          |             | MODEL NUMBER                | 27667      |
|          |          |             |                             | 27670      |
|          |          |             |                             | 27673      |
|          |          |             |                             | 27727      |

| <b>HOUSING</b>  |       |  |  |   |
|-----------------|-------|--|--|---|
|                 | 27730 | <b>Housing Assembly—Includes:</b>            |  | 1 |
| 3               | 27658 | Housing — Cast Iron                          |  | 1 |
| 6               | 21255 | Pipe Plug — S.S. — 1/2" NPT                  |  | 2 |
| 1               | 27665 | Gasket                                       |  | 1 |
| 4               | 24965 | Capscrew — S.S. — 1/4"                       |  | 4 |
| <b>IMPELLER</b> |       |  |  |   |
| 10              | 27662 | Impeller — Bronze 5.50" dia. for Model 27667 |  | 1 |
| 10              | 27663 | Impeller — Bronze 5.00" dia. for Model 27670 |  | 1 |
| 10              | 27664 | Impeller — Bronze 4.50" dia. for Model 27673 |  | 1 |
| 10              | 27731 | Impeller — Bronze 4.10" dia. for Model 27727 |  | 1 |
| 15              | 22131 | Impeller Drive Sleeve 3/4"                   |  | 1 |
| 9               | 22588 | Lock Nut S.S. — 3/8"                         |  | 1 |
| 2               | 21865 | Impeller Drive Key                           |  | 1 |

**MP PUMPS, INC.**  
**TECUMSEH PRODUCTS COMPANY**  
 34800 BENNETT DRIVE - FRASER, MI 48026-1686  
 (586) 293-8240 • FAX (586) 293-8469  
 (800) 563-8006

**SERVICE PARTS LIST  
Form 7088B**



34800 BENNETT - FRASER, MI 48026-1686  
 (586) 293-8240 - FAX (586) 293-8469  
 (800) 563-8006 - www.mppumps.com

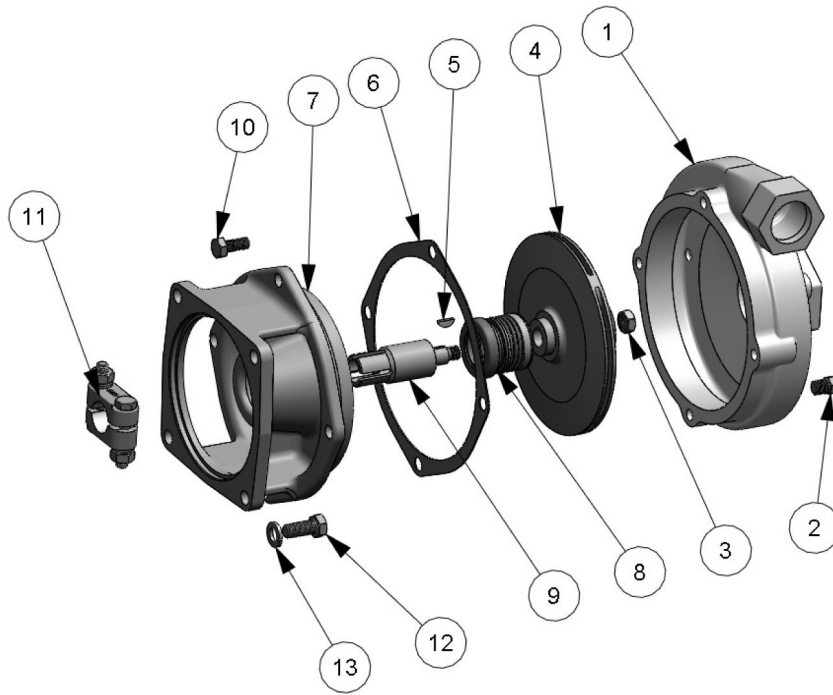
| ITEM NO.       | PART NO. | DESCRIPTION                       | QUANTITY REQUIRED PER MODEL |            |
|----------------|----------|-----------------------------------|-----------------------------|------------|
|                |          |                                   | ROTATION                    | Right Hand |
|                |          |                                   | PIPE SIZE                   | 1/4"x1"    |
|                |          |                                   | METAL                       | Cast Iron  |
|                |          |                                   | MODEL NUMBER                | 27667      |
|                |          |                                   |                             | 27670      |
|                |          |                                   |                             | 27673      |
|                |          |                                   |                             | 27727      |
| <b>CLAMP</b>   |          |                                   |                             |            |
| 8              | 23002    | <b>Clamp Assembly — Includes:</b> |                             | 1          |
|                |          | Clamp                             |                             | 2          |
| 5              | 21284    | Hex Nut — S.S. — 3/8"             |                             | 2          |
| 18             | 21238    | Lockwasher — S.S. — 3/8"          |                             | 2          |
| 16             | 21264    | Capscrew — S.S. — 3/8"            |                             | 2          |
| <b>SEAL</b>    |          |                                   |                             |            |
| 7              | 22272    | Seal Assembly                     |                             | 1          |
| 11             | 22133    | Seal Spring Retainer              |                             | 1          |
| <b>ADAPTOR</b> |          |                                   |                             |            |
| 14             | 28593    | Adaptor — Cast Iron               |                             | 1          |
| 12             | 21251    | Capscrew — S.S. — 3/8"            |                             | 4          |
| 13             | 21266    | Lockwasher — S.S. — 3/8"          |                             | 4          |



**Form 7088B**



34800 BENNETT - FRASER, MI 48026-1686  
 (586) 293-8240 - FAX (586) 293-8469  
 (800) 563-8006 - www.mppumps.com



| ITEM NO. | PART NO. | DESCRIPTION                                 | QTY.                         |   |
|----------|----------|---|------------------------------|---|
| 1        | 27658    | HOUSING C - 1 1/4" X 1 1/2"                 | 1                            |   |
| 2        | 21585    | PIPE PLUG ZPS - 1/8" NPT                    | 2                            |   |
| 3        | 22588    | LOCK NUT S.S. - 3/8"-24                     | 1                            |   |
| 4        | 27662    | IMPELLER B - Ø5.47                          | 1                            |   |
| 5        | 21865    | KEY S.S. - WOODRUFF #2                      | 1                            |   |
| *        | 6        | 27665                                       | GASKET - NI-2085             | 1 |
| 7        | 28593    | ADAPTOR D - S-60                            | 1                            |   |
| *        | 8        | 22272                                       | SEAL ASSEMBLY T-2100 - VITON | 1 |
| 9        | 22131    | DRIVE SLEEVE                                | 1                            |   |
| 10       | 24965    | HEX HD. CAPSCREW S.S. - 5/16-18 X 3/4 PATCH | 4                            |   |
| 11       | 23002    | CLAMP ASSY. S.S. - 5/8 & 3/4                | 1                            |   |
| 12       | 21251    | HEX HD SCREW S.S.- 5/16"-18 X .88"          | 4                            |   |
| 13       | 21266    | LOCKWASHER S.S. - 3/8"                      | 4                            |   |

\* - RECOMMENDED REPLACEMENT PARTS