



34800 BENNETT, FRASER, MI
(800) 563-8006
WWW.MPPUMPS.COM

FMX75

STAINLESS STEEL CENTRIFUGAL PUMP

INSTALLATION, OPERATION, AND REPAIR MANUAL

Model FMX75 is a high performance, self priming, 316 stainless steel centrifugal pump. The pump is ideal for marine, industrial, agricultural or commercial applications where suction lift is required.

The FMX75 model features all 316 stainless steel components for superior corrosion resistance when pumping chemical compounds. A carbon/ceramic/ Viton bellows seal is standard. Ports are 3/4" NPT with a 1/8" NPT fill port. The FMX75 is capable of 12 ft. suction lift (3450 RPM).



Pump shown with 115V motor

GENERAL SAFETY INFORMATION:

THE FOLLOWING WARNINGS ARE USED TO NOTIFY AND ADVISE THE USER OF THIS PRODUCT OF PROCEDURES THAT MAY BE DANGEROUS TO THE USER OR RESULT IN DAMAGE TO THE PRODUCT.

THIS BULLETIN MUST BE READ COMPLETELY BEFORE INSTALLING , OPERATING, OR SERVICING THE PUMP.

- **DO NOT** perform service or maintenance when the pumping system is pressurized. Injury or death may occur.
- **DO NOT** operate the pump in a manner which it was not intended to be used.
- **DO NOT** mount the pump such that high piping loads exist on the pump flanges, or in a rigid piping system that does not allow the pipe to expand and cause the pump to be strained.
- **DO NOT** continue to operate the pumping system when a known leak exists.
- **DO NOT** continue to operate the pump when unusual noise or vibration occurs.
- **DO NOT** continue to operate beyond the pressure or temperature limits stated in the product literature.
- **DO NOT** allow severe temperature changes to occur in a short time period within the pumping system.

INSTALLATION:

For optimum performance, place the pump as close to the liquid as possible to minimize suction lift. For best results, the pump should be installed no more than 10 feet above the liquid supply. The motor is splash resistant, not submersible, and should be located in a dry environment.



34800 BENNETT • FRASER, MI 48026-1686
(586) 293-8240 • FAX (586) 293-8469
(800) 563-8006 • www.mppumps.com

FORM 3807-B (4/16)

PRINTED IN THE U.S.A.

Piping /Mounting:

The pump inlet is 3/4" NPT pipe connections. Use pipe sealant on the threads. Do not rigid mount both of the flanges and the base to avoid mounting tolerance that may distort the motor base. Install the pump with the shaft in a horizontal direction. Never install the pump with the motor below the pump.

Electrical:

The motor must be protected from over current by using a fuse or circuit breaker. See NEC code for the proper minimum wire size for each voltage application. Make sure that the pump has the proper voltage rating to match the installation power. Do not use or install if the voltage on the label is different than the installation. All the wire connections must be secure and sealed to protect against arcing.

Operation:

The FMX75 is a self priming centrifugal pump and only requires priming prior to its initial start up. This is accomplished by removing the fill plug and filling the pump housing with liquid. The pump will retain sufficient liquid for self priming thereafter.

Repair and Maintenance:

The pump has a carbon/ceramic seal that may last several thousand hours based upon the application. If the motor is replaced, the mechanical seal should be replaced. A seal that leaks will show leakage between the pump adapter and the electric motor. Extreme leakage could damage the motor bearings and contaminate the inside of the electric motor if left unchecked. Replace any worn or damaged parts.

ASSEMBLY INSTRUCTIONS:

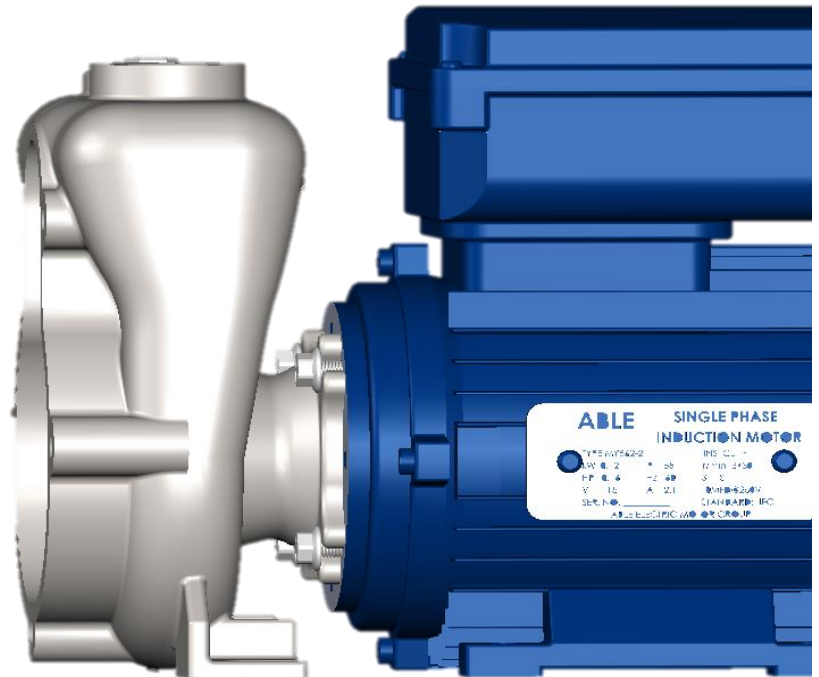
1. Stationary Seal Assembly

From the suction side of the housing # 3, press the stationary seal # 2 into the adapter. Make sure this seal face is sitting flush with the bottom of the bore in the housing.



2. Housing to electric motor Assembly

Slide the housing onto the electric motor #7 pilot. With a 8mm open wrench, tighten the four #5 capscrews.(6-9 ft lbs)



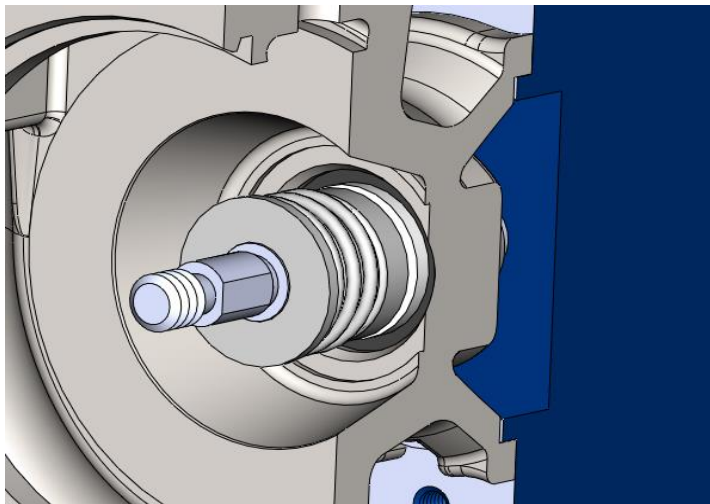
34800 BENNETT • FRASER, MI 48026-1686
(586) 293-8240 • FAX (586) 293-8469
(800) 563-8006 • www.mppumps.com

FORM 3807-B (4/16)

PRINTED IN THE U.S.A.

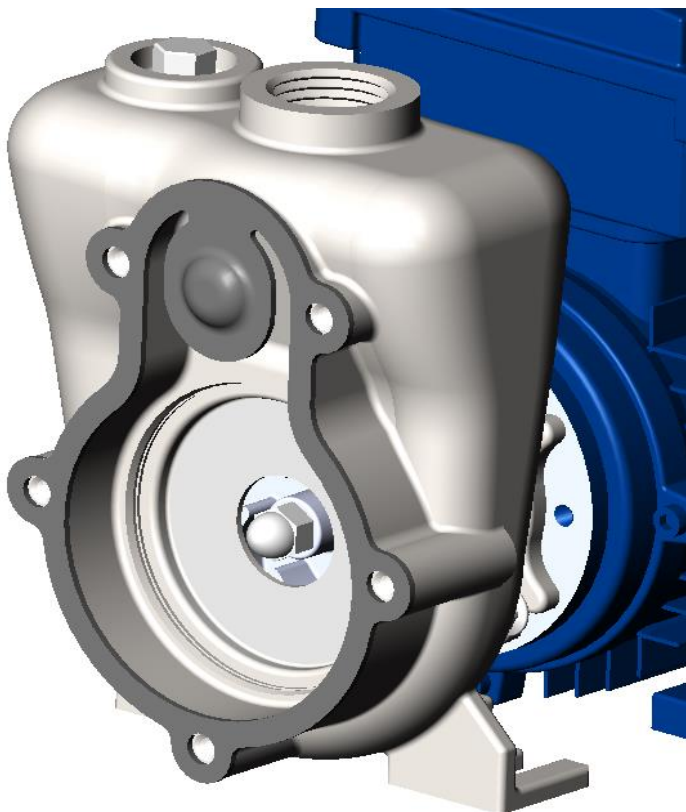
3. Rotating Seal Assembly

Place the rotating portion of the seal onto the shaft of the electric motor or pedestal pilot. Carbon faces the ceramic as shown.



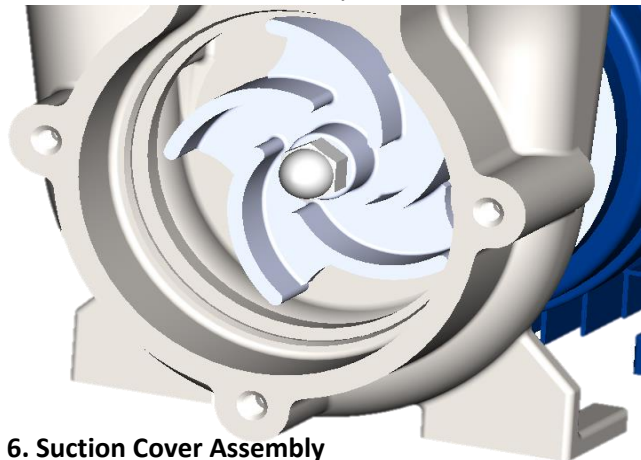
5. Wear Plate / Flapper Assembly

Place wear plate #13 into the housing as shown. Install #12 snap ring into the groove to secure wear plate to the housing. Place flapper #11 with dimple out as shown.



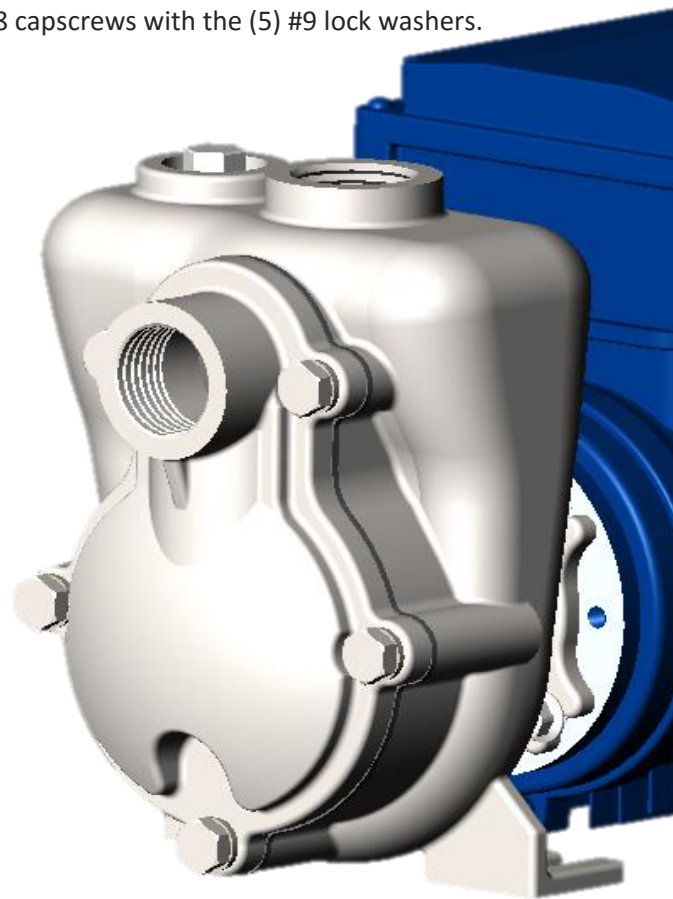
4. Impeller Assembly

Align the flats of the impeller #1 with that of the electric motor. Press down on the impeller and tighten acorn nut #14 by hand. Place screw driver between a blade and the cutwater of the housing to stop rotation. With a 7/16" socket, tighten the acorn nut the rest of the way. (6-9 ft-lbs)



6. Suction Cover Assembly

Place the #10 suction cover onto the housing. Using a 7/16" socket, tighten (6-9 ft. lbs.) (5) #8 capscrews with the (5) #9 lock washers.



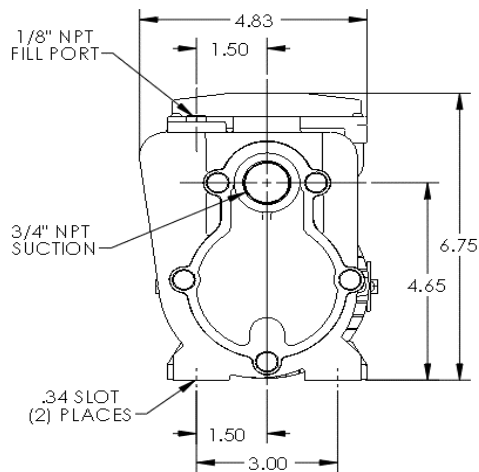
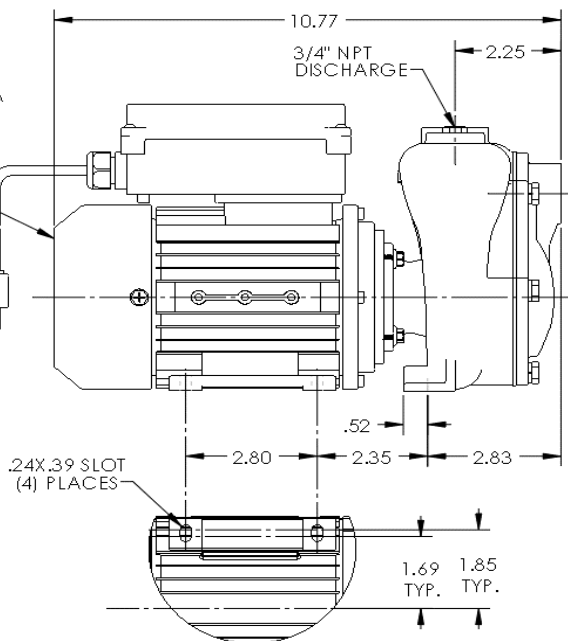
34800 BENNETT • FRASER, MI 48026-1686
(586) 293-8240 • FAX (586) 293-8469
(800) 563-8006 • www.mppumps.com

FORM 3807-B (4/16)

PRINTED IN THE U.S.A.

35321

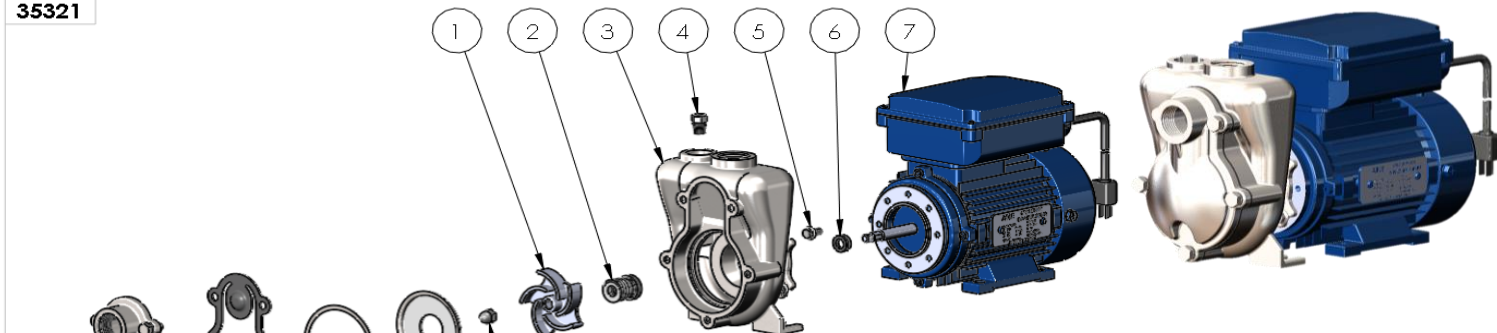
PSC MOTOR
IEC 56 B34 FRAME
115 VAC, 60 HZ
1/6HP, 3450RPM, 2.1 FLA
CONTINUOUS DUTY
TEFC IP55 ENCLOSURE
AUTOMATIC THERMAL
OVERLOAD



NOTE: THIS DRAWING OR PRINT, PROPERTY OF MP PUMPS INC. (MP PUMPS INC.) CONTAINS PROPRIETARY AND CONFIDENTIAL INFORMATION. IT SHALL BE USED ONLY AS APPROVED BY MP PUMPS AND SHALL NOT BE GIVEN TO OTHERS OR COPIED WITHOUT THE WRITTEN CONSENT OF MP PUMPS. RETURN TO MP PUMPS PROMPTLY WHEN REQUESTED.

G				UNLESS OTHERWISE NOTED THIRD ANGLE PROJECTION		MP PUMPS, INC.	
F				2 PLACE DIM ±.020		FRASER, MICHIGAN 48026, U.S.A.	
E				3 PLACE DIM ±.010		316 STAINLESS STEEL	
D				ANGULAR DIM ±1°		DRAWN BY: DATE COMP. APPROV. SCALE MADE FROM MADE FROM	
C				DO NOT SCALE		DRAWING NO. 35321	
B				REMOVED AND/OR CHANGE	ECN# 15.62	C.W. 11-30-15	DD
A				ECN# 14.50	REMOVED AND/OR CHANGE	SF 7/15/14	DD
REV DESCRIPTION				DATE	BY	EN	FMX75 SS:1/6-1 115V 60HZ TEFC T-21

35321



ITEM NO.	PART NUMBER	DESCRIPTION	MATERIAL	QTY.
1	34033	IMPELLER	316 STAINLESS STEEL	1
2	36863	SEAL ASSEMBLY	VITON/SC	1
3	39294	HOUSING	316 STAINLESS STEEL	1
4	21255	PIPE PLUG 1/8" NPT	316 STAINLESS STEEL	1
5	39827	HEX HEAD CAP SCREW M5 X 0.8	304 STAINLESS STEEL	4
6	35947	V RING	VITON	1
7	39280	ELECTRIC MOTOR	TEFC	1
8	35039	CAPSCREW 1/4-20X5/8	316 STAINLESS STEEL	5
9	33564	LOCKWASHER 1/4"	304 STAINLESS STEEL	5
10	35024	COVER	316 STAINLESS STEEL	1
11	35025	GASKET	VITON	1
12	35027	SNAP RING	316 STAINLESS STEEL	1
13	35026	WEAR PLATE	316 STAINLESS STEEL	1
14	28766	ACORN NUT	316 STAINLESS STEEL	1

NOTE: THIS DRAWING OR PRINT, PROPERTY OF MP PUMPS INC. (MP PUMPS INC.) CONTAINS PROPRIETARY AND CONFIDENTIAL INFORMATION. IT SHALL BE USED ONLY AS APPROVED BY MP PUMPS AND SHALL NOT BE GIVEN TO OTHERS OR COPIED WITHOUT THE WRITTEN CONSENT OF MP PUMPS. RETURN TO MP PUMPS PROMPTLY WHEN REQUESTED.

G				UNLESS OTHERWISE NOTED THIRD ANGLE PROJECTION		MP PUMPS, INC.	
F				2 PLACE DIM ±.020		FRASER, MICHIGAN 48026, U.S.A.	
E				3 PLACE DIM ±.010		316 STAINLESS STEEL	
D				ANGULAR DIM ±1°		DRAWN BY: DATE COMP. APPROV. SCALE MADE FROM MADE FROM	
C				DO NOT SCALE		DRAWING NO. 35321	
B				REMOVED AND/OR CHANGE	ECN# 15.62	C.W. 11-24-15	DD
A				ECN# 14.50	REMOVED AND/OR CHANGE	SF 7/15/14	DD
REV DESCRIPTION				DATE	BY	EN	FMX75 SS:1/6-1 115V 60HZ TEFC T-21

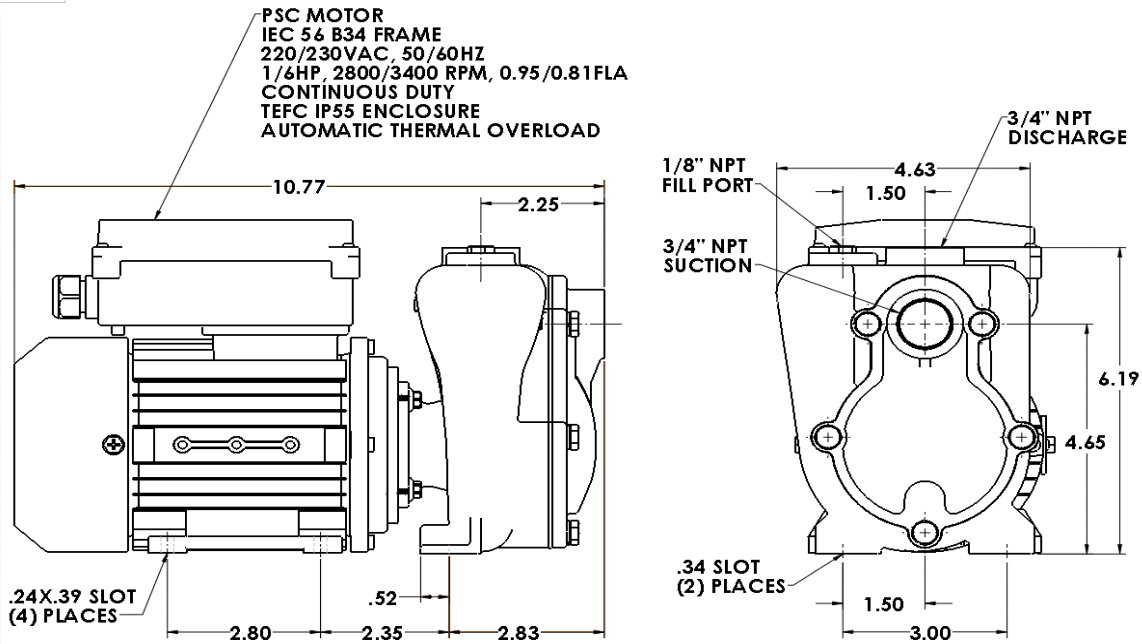


34800 BENNETT • FRASER, MI 48026-1686
(586) 293-8240 • FAX (586) 293-8469
(800) 563-8006 • www.mppumps.com

FORM 3807-B (4/16)

PRINTED IN THE U.S.A.

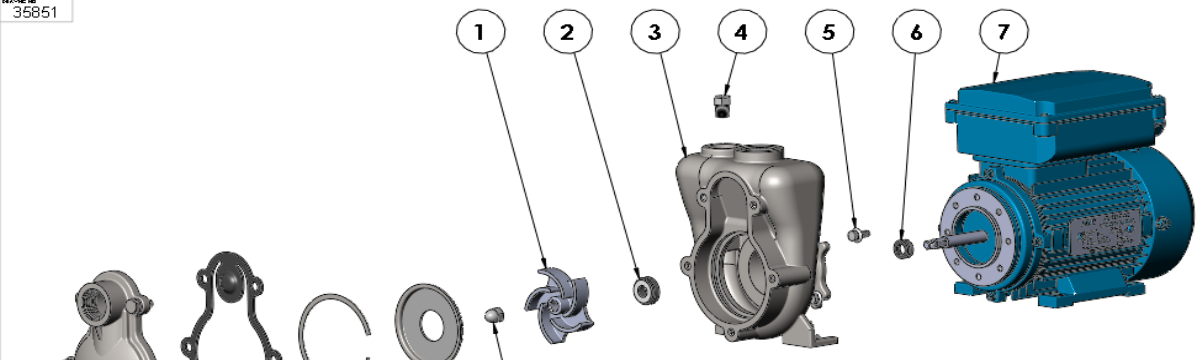
35851



NOT TO SCALE
 ALL DIMENSIONS ARE IN INCHES
 UNLESS OTHERWISE SPECIFIED
 TOLERANCES ARE:
 FRACTIONS DECIMALS
 .0005 .0005
 .001 .001
 .005 .005
 .010 .010
 .020 .020
 .030 .030
 .040 .040
 .050 .050
 .060 .060
 .070 .070
 .080 .080
 .090 .090
 .100 .100
 .150 .150
 .200 .200
 .300 .300
 .400 .400
 .500 .500
 1.000 1.000
 2.000 2.000
 3.000 3.000
 4.000 4.000
 5.000 5.000
 6.000 6.000
 7.000 7.000
 8.000 8.000
 9.000 9.000
 10.000 10.000
 15.000 15.000
 20.000 20.000
 30.000 30.000
 40.000 40.000
 50.000 50.000
 60.000 60.000
 70.000 70.000
 80.000 80.000
 90.000 90.000
 100.000 100.000
 150.000 150.000
 200.000 200.000
 300.000 300.000
 400.000 400.000
 500.000 500.000
 600.000 600.000
 700.000 700.000
 800.000 800.000
 900.000 900.000
 1000.000 1000.000
 1500.000 1500.000
 2000.000 2000.000
 3000.000 3000.000
 4000.000 4000.000
 5000.000 5000.000
 6000.000 6000.000
 7000.000 7000.000
 8000.000 8000.000
 9000.000 9000.000
 10000.000 10000.000

G		FRASER, MICHIGAN 48026, U.S.A.	
F		MP PUMPS, INC.	
E		FRASER, MICHIGAN 48026, U.S.A.	
D		DO NOT SCALE	
C		S.F. 7/22/14 D.D.	
B		DATE: 7/22/14	
A		FRX75-SP SS-16-1230VAC 600RPM T-21 ISO 8846	
REV		35851	

35851



ITEM NO.	PART NUMBER	DESCRIPTION	MATERIAL	QTY.
1	34033	IMPELLER	316 STAINLESS STEEL	1
2	36863	SEAL ASSEMBLY	VITON/SC	1
3	39294	HOUSING	316 STAINLESS STEEL	1
4	21255	PIPE PLUG 1/8" NPT	316 STAINLESS STEEL	1
5	39827	HEX HEAD CAP SCREW M5 X 0.8	304 STAINLESS STEEL	4
6	35947	V RING	VITON	1
7	39292	ELECTRIC MOTOR	TEFC	1
8	35039	CAPSCREW 1/4-20X5/8	316 STAINLESS STEEL	5
9	33564	LOCKWASHER 1/4"	304 STAINLESS STEEL	5
10	35024	COVER	316 STAINLESS STEEL	1
11	35025	GASKET	VITON	1
12	35027	SNAP RING	316 STAINLESS STEEL	1
13	35026	WEAR PLATE	316 STAINLESS STEEL	1
14	28766	A CORN NUT	316 STAINLESS STEEL	1

G		FRASER, MICHIGAN 48026, U.S.A.	
F		MP PUMPS, INC.	
E		FRASER, MICHIGAN 48026, U.S.A.	
D		DO NOT SCALE	
C		S.F. 7/22/14 D.D.	
B		DATE: 7/22/14	
A		FRX75-SP SS-16-1230V/50/60 T21ISO 8846	
REV		35851	



34800 BENNETT • FRASER, MI 48026-1686
 (586) 293-8240 • FAX (586) 293-8469
 (800) 563-8006 • www.mppumps.com

FORM 3807-B (4/16)
 PRINTED IN THE U.S.A.